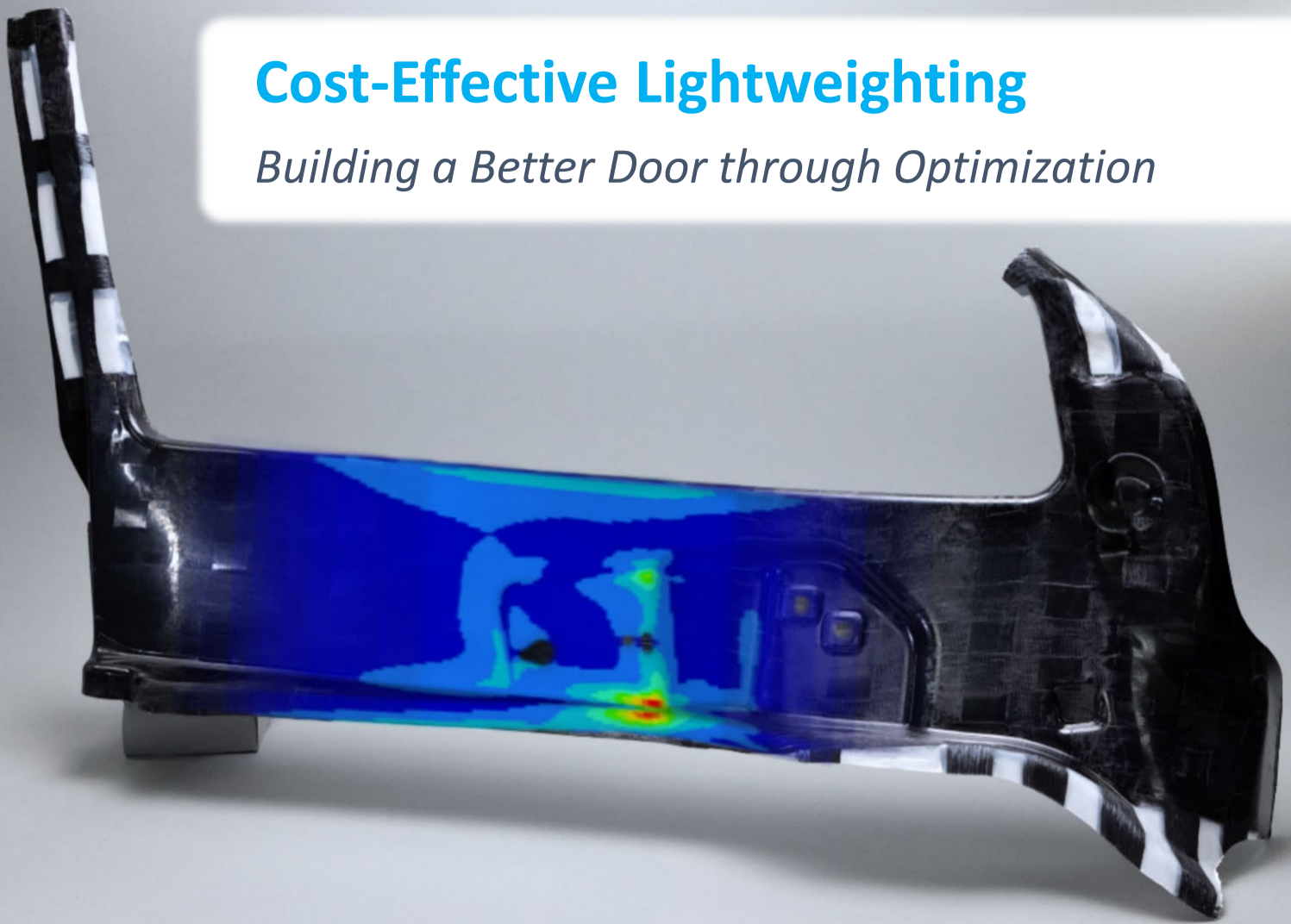
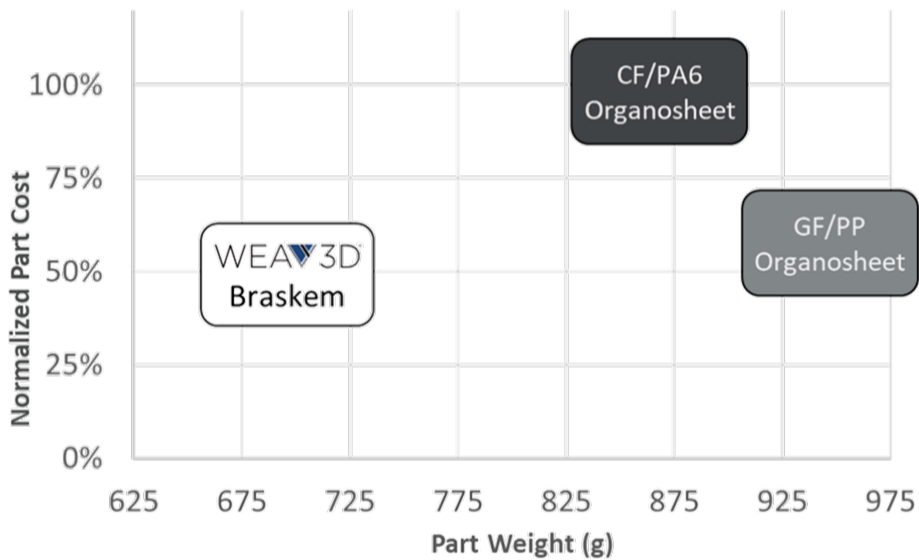


Cost-Effective Lightweighting

Building a Better Door through Optimization



Normalized Cost vs. Part Weight

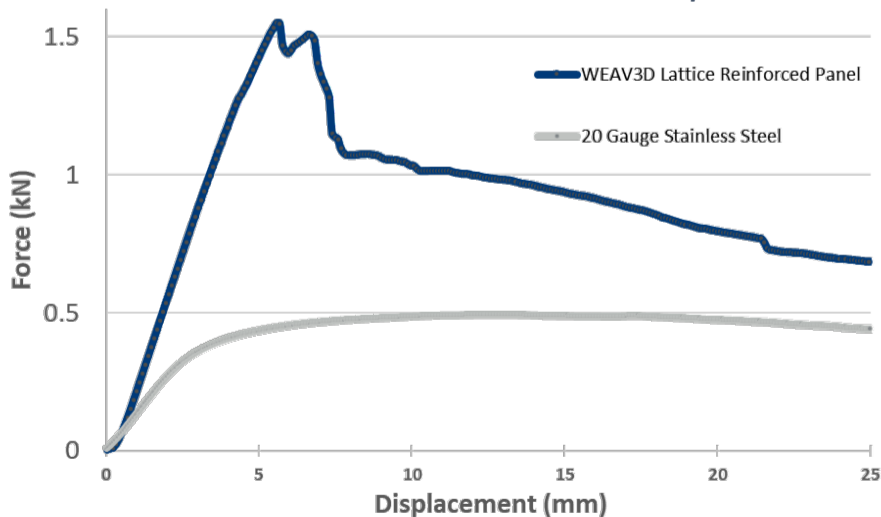


Structural automotive door component manufactured from Braskem TI4003F PP and WEAV3D glass and carbon fiber PP lattice.

Relative to the CF/PA6 organosheet baseline, WEAV3D lattice optimization:

- Reduces part weight by 20%
- Reduces cost by 50%
- Increases trim yield from 25 wt% to 45 wt%
- Reduce trim waste by 63%

Steel vs. WEAV3D Panel Comparison



WEAV3D lattice reinforced panels can meet or exceed the performance of sheet metal:

- 1.8x bending stiffness vs. 20 gauge SS
- 3.1x maximum bending load
- 2x bending energy absorption
- 65% reduction in weight

Scan the QR code to learn more.

